

MODEL ESTIMATE FOR CONSTRUCTION OF GRAMIN HUT SHED (4 NOS) INCLUDING ROAD WITH DRAIN, TOILET WITH WATER STORAGE TANK (1000 LTR), GARBAGE PIT AND PUMP WITHIN PASCHIM MEDINIPUR DISTRICT

Item no	Description of Item	No	Length	Breadth	Height	Quantity	Unit	SK	SSK	USK	Cement (bags)	Sand (m3)	Stone (m3)	Bricks (nos)	Others
1	Earth work in excavation in mixed medium hard soil with soft morum, hard earth, kankar, etc. to be excavated by pick axe, lead upto 80 ft and lift upto 5 ft @ 62 cft /Usk.														
	Hut Shed														
	Wall	32	2.150	0.450	0.450	13.932									
		8	3.350	0.450	0.450	5.427									
	Pillar	40	0.750	0.750	0.750	16.875									
	Road With Drain														
	Wall	2	51.350	0.475	0.250	12.196									
		5	20.050	0.475	0.250	11.905									
	Garbage Pit														
	Toilet	2	3.100	2.200	0.250	3.410									
		6	0.900	0.900	0.900	4.374									
	leach pit	4	0.785		2.800	8.792									
					Total	76.910	Cum			43.70					
2	Sand filling in foundation trenches or plinth with fine sand, in layer by layer not exceeding 150 mm including watering and ramming etc. layer by layer complete. 4.6 cum per Usk.														
	Hut Shed														
		32	2.150	0.450	0.100	3.096									
		8	3.350	0.450	0.100	1.206									
		40	0.750	0.750	0.150	3.375									
	Floor	4	9.350	3.350	0.325	40.719									
	Road With Drain														
		2	25.125	1.250	0.075	4.711									
		5	9.350	1.250	0.075	4.383									
	Garbage Pit														
		2	24.725	1.050	0.075	3.894									
	Toilet														
		6	0.900	0.900	0.150	0.729									

WR-308

m no	Description of Item	No	Length	Breadth	Height	Quantity	Unit	SK	SSK	USK	Cement (bags)	Sand (m3)	Stone (m3)	Bricks (nos)	Others		
7	Cement concrete(1:1.5:3) with graded stone chips 20 mm down excluding shuttering and reinforcement if any in ground floor and foundation @ 2cum/2Sk & 3 Usk and cement0.2776cum/cum, sand 0.45 cum /cum, &stonechips 0.90 cum /cum.	5	20.050	0.475	0.100	4.762											
		2	25.125	1.550	0.075	5.842											
		5	9.350	1.550	0.075	5.435											
		2	3.100	2.200	0.100	1.364											
		6	0.900	0.900	0.100	0.486											
		4	0.875	1.075	0.100	0.376											
		2	2.125	0.775	0.100	0.329											
		Total						46.318		46.32		69.48	208.23	21.77	43.54		
		Hut Shed	40	0.75	0.75	0.15	3.375										
			40	0.5	0.5	0.15	1.500										
	40	0.25	0.25	0.625	1.563												
Toilet																	
	fdn	6	0.900	0.900	0.125	0.608											
		6	0.575	0.575	0.125	0.248											
	col	6	0.25	0.25	3.25	1.219											
	beam	4	4.825	0.25	0.25	1.206											
		8	1.875	0.25	0.25	0.938											
		2	1.075	0.25	0.25	0.134											
	Lintal	6	1.25	0.125	0.15	0.141											
	slab	1	5.075	2.625	0.1	1.332											
Total						12.263		12.26		18.39	101.07	5.27	10.55				

m no	Description of Item	No	Length	Breadth	Height	Quantity	Unit	SK	SSK	USK	Cement (bags)	Sand (m3)	Stone (m3)	Bricks (nos)	Others	
8	Hire and labour charges for shuttering with centering and necessary staging upto 4 m. using approved stout props and thick hard wood planks of approved thickness with required bracing for concrete slabs , beams, columns, lintels curved or straight including fitting, fixing and striking out after completion of works. (upto roof of ground floor) where vertical prop not required. 2nos Sk & 1 nos Usk @ 14 sqm.															
	Hut Shed	Column	40	1.000	0.625	25.000										
	Toilet	col	6	3.25	1	19.500										
		beam	8	4.825	0.15	5.790										
			16	1.875	0.15	4.500										
			4	1.075	0.15	0.645										
		Lintel	12	1.25	0.15	2.250										
			6	0.75	0.125	0.563										
		slab	1	5.275	2.825	14.902										
						73.149		10.45		5.22						
9	Brick work with 1st class bricks with c/morter 6:1															
	Hut Shed															
		Wall	32	2.150	0.25	0.55	9.460									
			8	3.350	0.25	0.55	3.685									
	Road with drain															
		Wall	2	53.650	0.25	0.15	4.024									
			5	22.350	0.25	0.15	4.191									
	Garbage Pit															
		Wall	2	2.900	0.25	1.5	2.175									
			4	1.500	0.25	1.125	1.688									
	Toilet		2	2.000	0.25	0.75	0.750									

m no	Description of Item	No	Length	Breadth	Height	Quantity	Unit	SK	SSK	USK	Cement (bags)	Sand (m3)	Stone (m3)	Bricks (nos)	Others	
10	125 mm th brick work with 1st class bricks with c/mortor 4:1 Toilet	Wall	2	4.825	0.25	0.45	1.086									
			2	1.875	0.25	0.45	0.422									
			1	1.075	0.25	0.45	0.121									
			2	1.250	0.25	0.45	0.281									
							Total	27.882		19.92		39.83	44.19	9.20		10845.93
11	15 mm thk Sand Cement plaster (1:4) work with materials supplied at site. 2nos Sk & 3 nos Usk @ 18 Sqm.Cement 0.46 Cum % Sqm and Sand 1.84 Cum % Sqm. Garbage Pit	Wall outer side=	2	2.900		1.500	8.700									
			4	1.500		1.125	6.750									
			2	2.900		0.750	4.350									
		inner side	2	2.400		1.500	7.200									
			4	1.500		1.125	6.750									
			2	2.400		0.750	3.600									
		top	2	9.155		0.250	4.578									
		Hut Shed	4	27.400		0.600	65.760									
		Road with drain														
		Wall outer side=	2	25.625		0.450	23.063									
			6	9.975		0.450	26.933									
Toilet																
	Wall outer side=	2	4.850	--	3.800	36.860										
	inside	4	4.400		2.400	42.240										
		2	6.050		2.400	29.040										
		4	1.000		1.200	4.800										
					Total	37.084		4.64		6.18	9.77	1.36		1836.02		

m no	Description of item	No	Length	Breadth	Height	Quantity	Unit	SK	SSK	USK	Cement (bags)	Sand (m3)	Stone (m3)	Bricks (nos)	Others
12	Neat Cement Punning. 2 nos Sk. & 1 nos Usk @ 50 Sqm. Cement 0.152 Cum % Sqm.														
	Hut Shed														
	Outside	4	27.400	0.600		65.760									
	Road with drain														
	Outside	2	25.625		0.450	23.063									
		6	9.975		0.450	26.933									
	Garbage Pit														
	Wall outer side=	2	2.900		1.500	8.700									
		4	1.500		1.125	6.750									
		2	2.900		0.750	4.350									
	inner side	2	2.400		1.500	7.200									
		4	1.500		1.125	6.750									
		2	2.400		0.750	3.600									
	top	2	9.155		0.250	4.578									
					Total=	157.683	Sqm	6.3073		3.15	6.91				
13	25 mm th artificial stone in floor, dado, staircase etc with cement concrete (1:2:4) with stone chips, laid in panels as directed with topping made with ordinary or white cement (as necessary) and marble dust in proportion (1:2) including smooth finishing and rounding off corners including raking out joints or roughening of concrete surface and application of cement slurry before flooring works using cement @ 1.75 kg/sq.m all complete including all materials and labour. In ground floor. 3 mm. thick topping (High polishing grinding on this item is not permitted with ordinary														

m no	Description of Item	No	Length	Breadth	Height	Quantity	Unit	SK	SSK	USK	Cement (bags)	Sand (m3)	Stone (m3)	Bricks (nos)	Others
	Hut Shed	4	9.850	3.850		151.690	sqm								
		4	1.200	1.000		4.800									
		2	2.125	0.900		3.825									
		Total					160.315	sqm	33.40		20.04	39.50	1.80	3.58	
14	Re-inforcement for R.C.C. work in all sorts of structures including distribution bars, stirrups, binders etc Initial straining and removal of loose rust (if necessary) cutting to requisite length,														
	1.20% of M20 cc					1.155	MT	15.75		10.50					
15	25mm. thick damp proof course with cement concrete with stone chips (1:1.5:3) [with graded stone aggregate 10 mm nominal size] and admixture of water proofing compound as per manufacturer's specification followed by two coat of polymer based paint, (1st coat after 4 to 5 days of concrete laying and 2 nd coat just before brick masonry work) as directed (cost of water proofing														
	Toilet	2	4.075	0.125		1.019									
		5	1.875	0.125		1.172									
		2	1.075	0.125		0.269									
						2.459	sqm	0.27		0.41	0.51	0.03	0.055		
						Total	179.11		0.40	#####					
16	Water Carrier									5.57					
17	Supervisor for overall supervision of the work								11.365						
						Total	179.11		11.77	284.1	438.00	45.29	54.08	12681.94	
						Total	179		12	284	438			12682	
						Total	179.11		11.77	284.1	438.00	45.29	54.08	12681.94	
						Total	179		12	284	438			12682	

m no	Description of Item	No	Length	Breadth	Height	Quantity	Unit	SK	SSK	USK	Cement (bags)	Sand (m3)	Stone (m3)	Bricks (nos)	Others	
SI No	Labour component:-	Quantity	Rate / M/d			Amount										
i	Skilled	179	Rs 382 / M/d			68378.00										
ii	Semi-Skilled	12	Rs 286.5 / M/d			3438.00										
iii	Un-Skilled	284	Rs 191/M/d			54244.00										
					Total	Rs. =	126060.00									
Materials Component:-																
1	Cement	438	Bag	379.47	166207.86											
2	Course Sand	45.29	Cum	749.70	33957.65											
3	Stone-Chips 20 mm	54.08	Cum	2236.50	120960.66											
4	Stone-Chips 5.6 mm	3.630	Cum	1913.10	6944.30											
5	Damp Proof Compound	1.000	ltr	250.00	250.00											
6	Bricks	12682	Nos	8.50	107797.00											
7	Fine sand	91.439	Cum	400.05	36580.24											
8	Polythene	43.81	kg	110.00	4819.18											
9	Hire charge of shuttering	73.15	sqm	150.00	10972.35											
10	Black annealed wire	15.00	kg	110.00	1650.00											
11	MS tubular roof truss with post including fabrication and all complete	20 nos	kg	81.70	539220.00											
12	Supplying, fitting and fixing GCI Sheet for roofing with all complete	4x2x9.85x2.20=173.36 sqm	Sqm	721.28	125041.10											
13	Supplying, fitting and fixing GI ridge 0.63 mm with 300 mm lap	39.900	mtr	425.60	16981.44											
14	Galvanised iron sheet eaves gutter fitted and fixed with necessary 50 mm X 6 mm M.S flat bar clamps 300 mm. wide	78.800	mtr	450.24	35478.91											
15	Holding down bolt with nut including 100 x 100 x 6 mm plate washer at bottom fitted complete 16 mm dia bolt 450 mm long	160.000	Each	129.92	20787.20											
16	Priming two coats on steel surface	120.00	Sqm	32.48	3897.60											
17	Painting two coats on steel surface	120.00	Sqm	78.40	9408.00											
18	Display Board & photo					2650.00										
19	Picked jhama bricks	440	nos.	8.30	3652.00											
20	MS reinforcement	1.155	mt	59368.75	68579.35											
21	80 mm thick interlocking designer concrete paver block M-40 grade Colour Decorative	150.35	Nos	1753.92	263701.87											
22	Nail	8.00	kg	80.00	640.00											
23	RCC ring 1.0 m dia	32.00	nos.	600.00	19200.00											
24	Supplying, fitting and fixing Shallow water closet Indian pattern (I.P.W.C.) of approved make in white vitreous chinaware in position (excluding cost of concrete for fixing). 580 mm long	4.00	nos.	1193.00	4772.00											
25	Supplying, fitting and fixing RCC ventilator 20. mm th (Above 0.10 sq.m. area)	10.000	each	148.48	1484.80											
26	Syphon(p Trap) market rate	4.00	nos.	150.00	600.00											

27	Supplying, fitting and fixing Flat back urinal (half stall urinal) in white vitreous chinaware of approved make in position with brass screws on 75 mm X 75 mm X 75 mm wooden blocks complete. 465 mm X 355 mm X 265 mm	2.00	nos.	820.00	1640.00
28	Supplying, fitting and fixing Squating plate with integral flushing in white vitreous chinaware of approved make in cement concrete (6:3:1) with jhama chips complete. (Payment of concrete will be paid seperately). (450mm x 350mm)	2.00	nos.	1103.00	2206.00
29	110 mm dia pvc pipe including fitting & fixing	20.00	mtr	251.00	5020.00
30	Supplying P.V.C. water storage tank of approved quality with closed top with lid (Black) - Multilayer 1000 ltr capacity	1.00	no.	6110.00	6110.00
31	White wash three coats	110.465	sqm	20.01	2210.40
32	Door with GI sheet & wood batten including fitting & fixing	6.00	nos.	2000.00	12000.00
33	Supplying, fitting and fixing Foot rest for water closet of size 275 mm X 125 mm with Porcelain of approved make	4.00	pair	257.00	1028.00
34	Construction of inspection pit	2	Nos	2500.00	5000.00
35	Supplying, fitting & fixing for sanitary & plumbing works				5000.00
Total					164647.91

Particulars	Amount (Rs.)
Total Wage Cost	126060.00
Total materials and other	164647.91
Total	1772507.91
Say	1772508.00

Ratio = $\frac{16,80,550.03}{18,06,610.00} = 3.97$

(Midnapore station yard)	20 mm	5.6 mm
Rate at station yard incl GST 5%	Rs. 1785.00	1461.6
Loading & unloading	Rs. 77.00	77.00
Carriage upto 5.00 km	Rs. 124.00	124.00
5-10 km	Rs. 54.50	54.50
10-20 km	Rs. 101.00	101.00
20-30 km	Rs. 95.00	95.00
Total	Rs. 2236.50	1913.1

Prepared By
 Technical Assistant (HQ)
 MGNREGA CELL
 Paschim Medinipur

Checked By
 Assistant Engineer,
 MGNREGA CELL
 Paschim Medinipur

Vetted By

Vetted for Rs. 18,06,610.00.
(Supers eighteen lakh six thousand six hundred ten only)

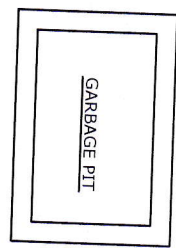
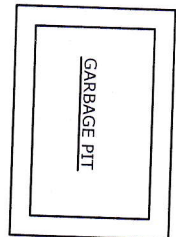
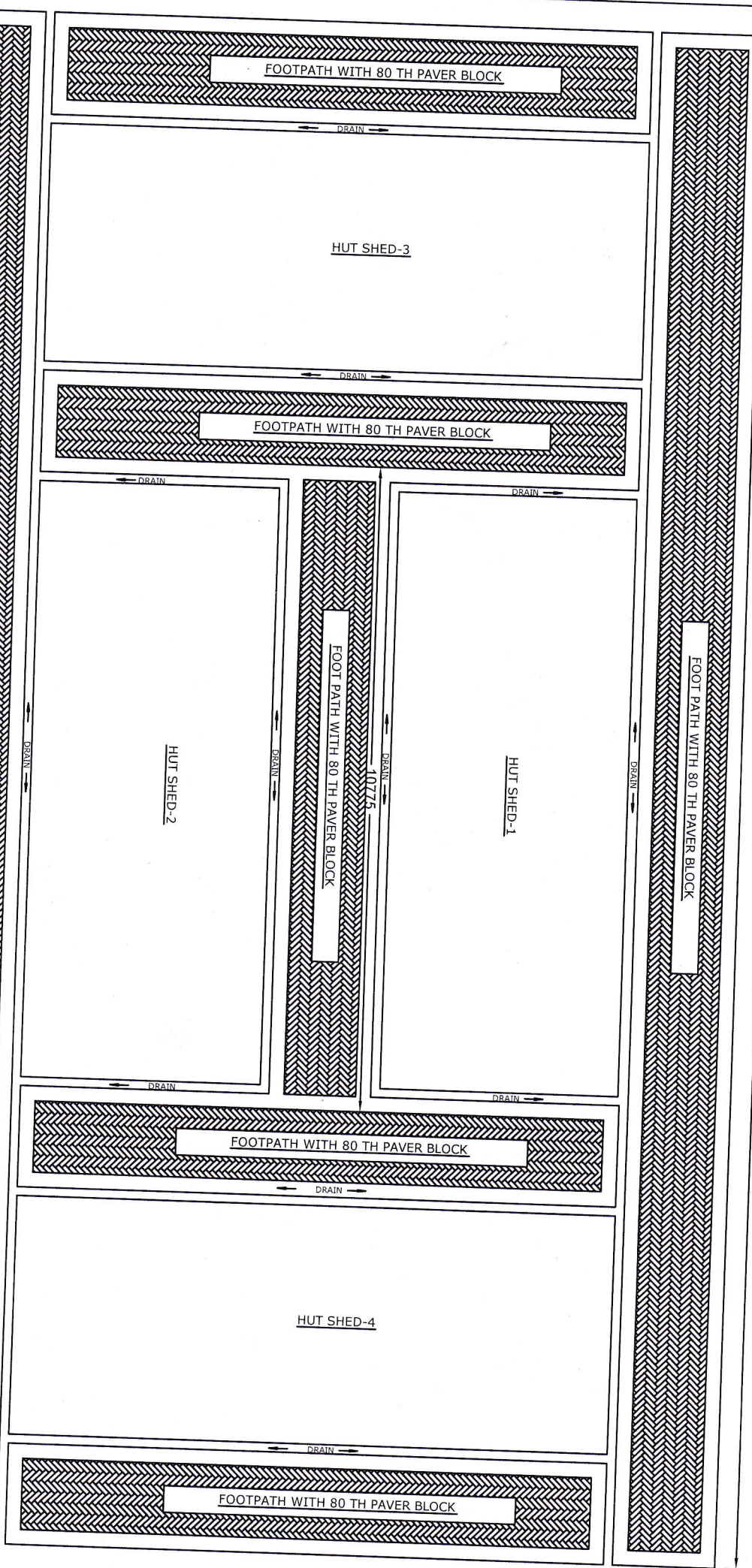
Prepared By
 District Nodal Officer
 MGNREGA Cell
 Paschim Medinipur

Vetted By
 Executive Engineer, Dep
 Panchayat & Rural Dev
 Govt of West Bengal
 Paschim Medinipur Zilla Panchayat

02/01/19
Technical Assistant (HO)
MGNREGA CELL
Paschim Medinipur

SITE PLAN FOR CONSTRUCTION OF GRAMIN HUT

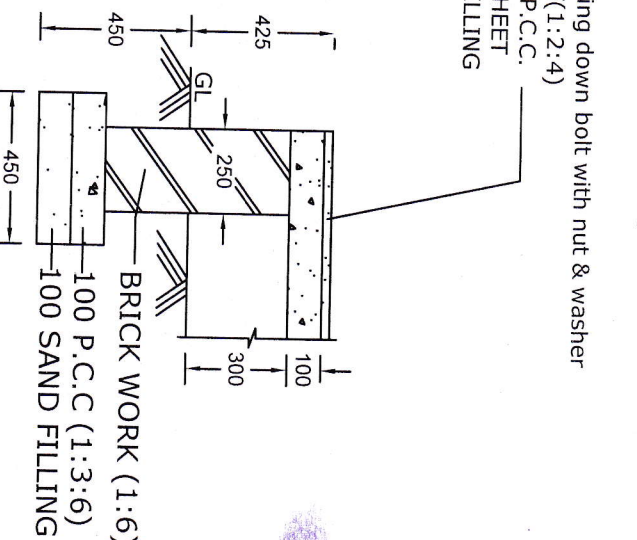
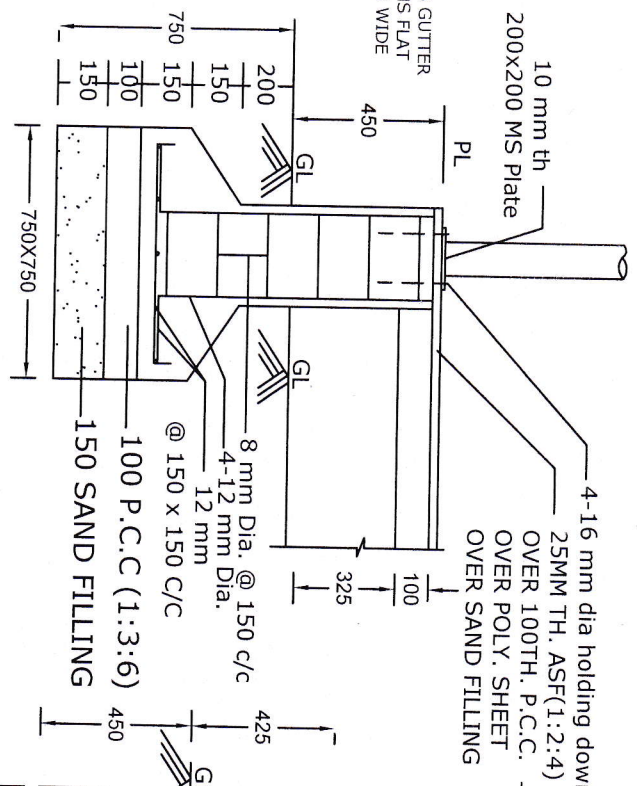
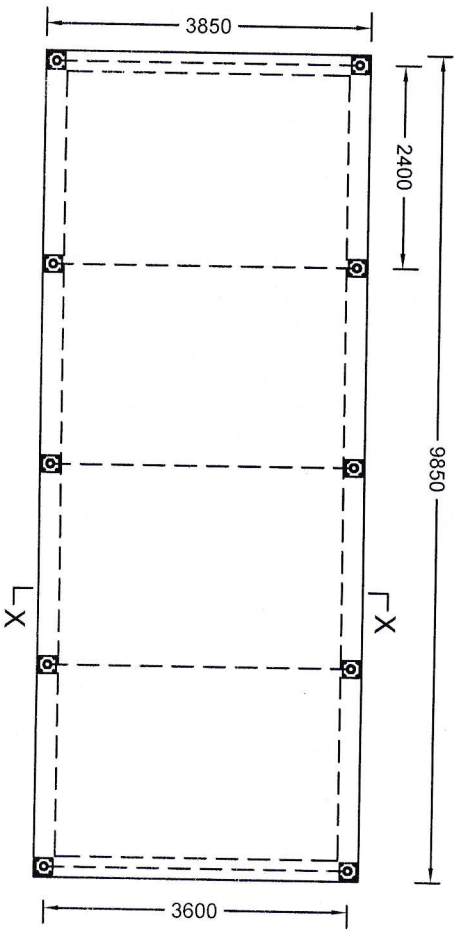
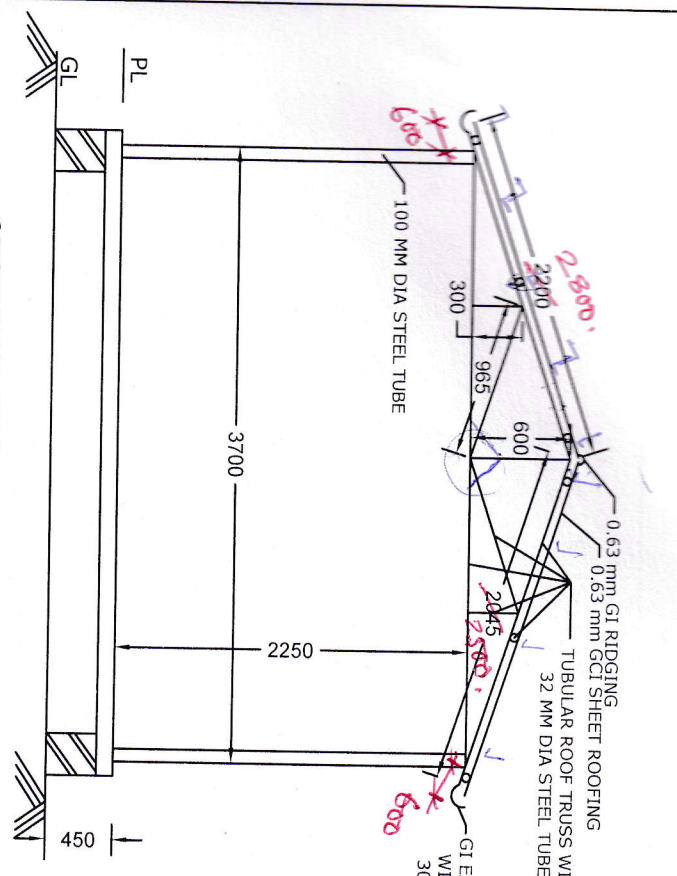
21/11/15
Assistant Engineer
MGNREGA CELL
Paschim Medinipur



13675

25625

MODEL DRAWING FOR CONSTRUCTION OF GRAMIN HUT SHED WITHIN PASCHIM MEDINIPUR DISTRICT



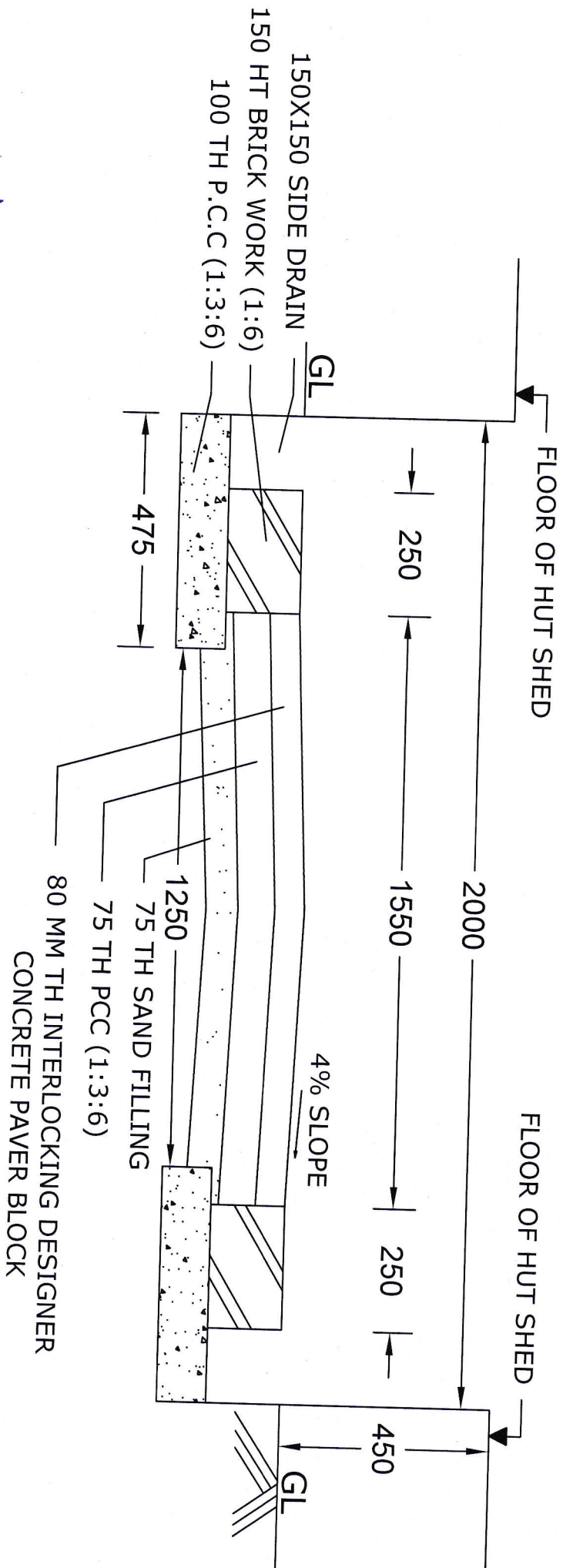
NOTES:-
 All dimensions are in MM.
 Scale-1:100, 1:50 & 1:25
 Grade of conc -P.C.C.-(6:3:1), R.C.C.-(3:1.5:1)

Technical Assistant (HO),
 MGNREGA CELL,
 Paschim Medinipur,
 PREPARED BY:
 02/01/19

Assistant Engineer,
 MGNREGA CELL,
 Paschim Medinipur,
 CHECKED BY:
 02/01/19

Executive Engineer,
 Panchayet & Rural Dev Dep
 Govt of West Bengal
 Paschim Medinipur Zilla Panchay
 APPROVED BY:
 02/01/19

C/S OF FOOTPATH WITH SIDE DRAIN FOR GRAMIN HUT
(SCALE-1:25)

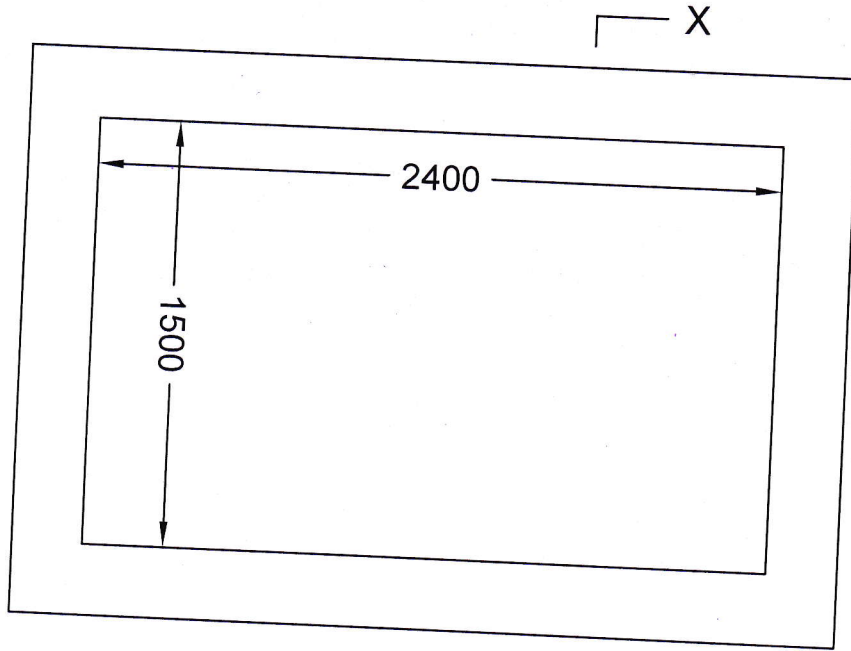


[Signature]
 02/01/19
 Technical Assistant (HO),
 MGNREGA CELL
 Paschim Medinipur,
 PREPARED BY:

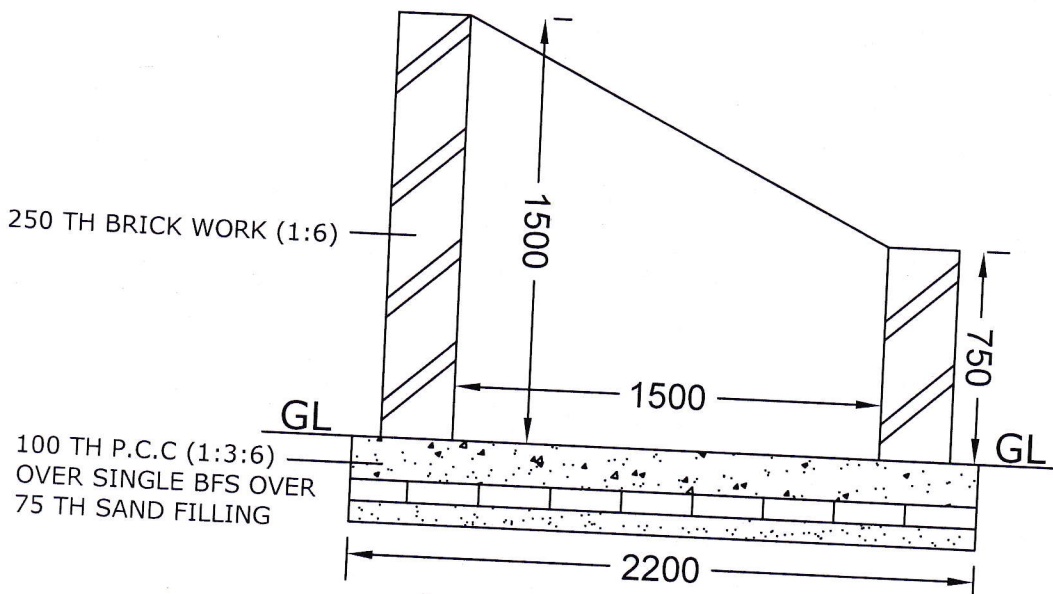
[Signature]
 02/01/19
 Assistant Engineer,
 MGNREGA CELL
 Paschim Medinipur
 CHECKED BY:

Executive Engineer,
 Panchayet & Rural Dev Dep
 Govt. of West Bengal
 schim Medinipur Zilla Darsha
 APPROVED BY:

DETAILS OF GARBAGE PIT FOR GRAMIN HUT
(SCALE-1:50)



PLAN

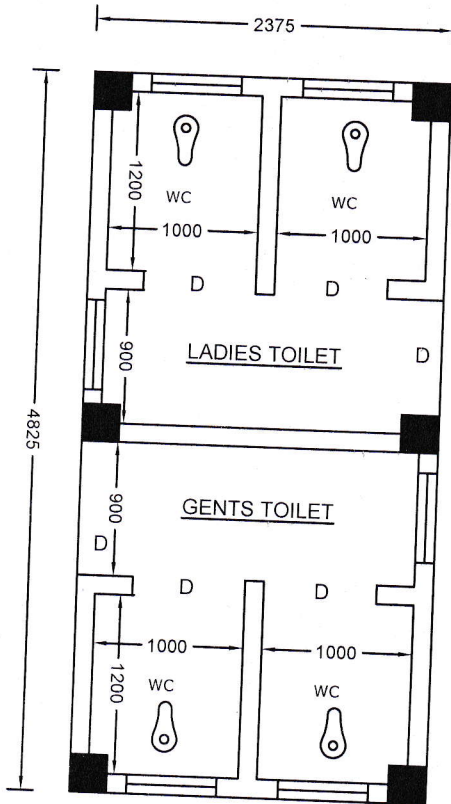


02/01/19
Technical Assistant (HO)
MGNREGA CELL
Paschim Medinipur
PREPARED BY:

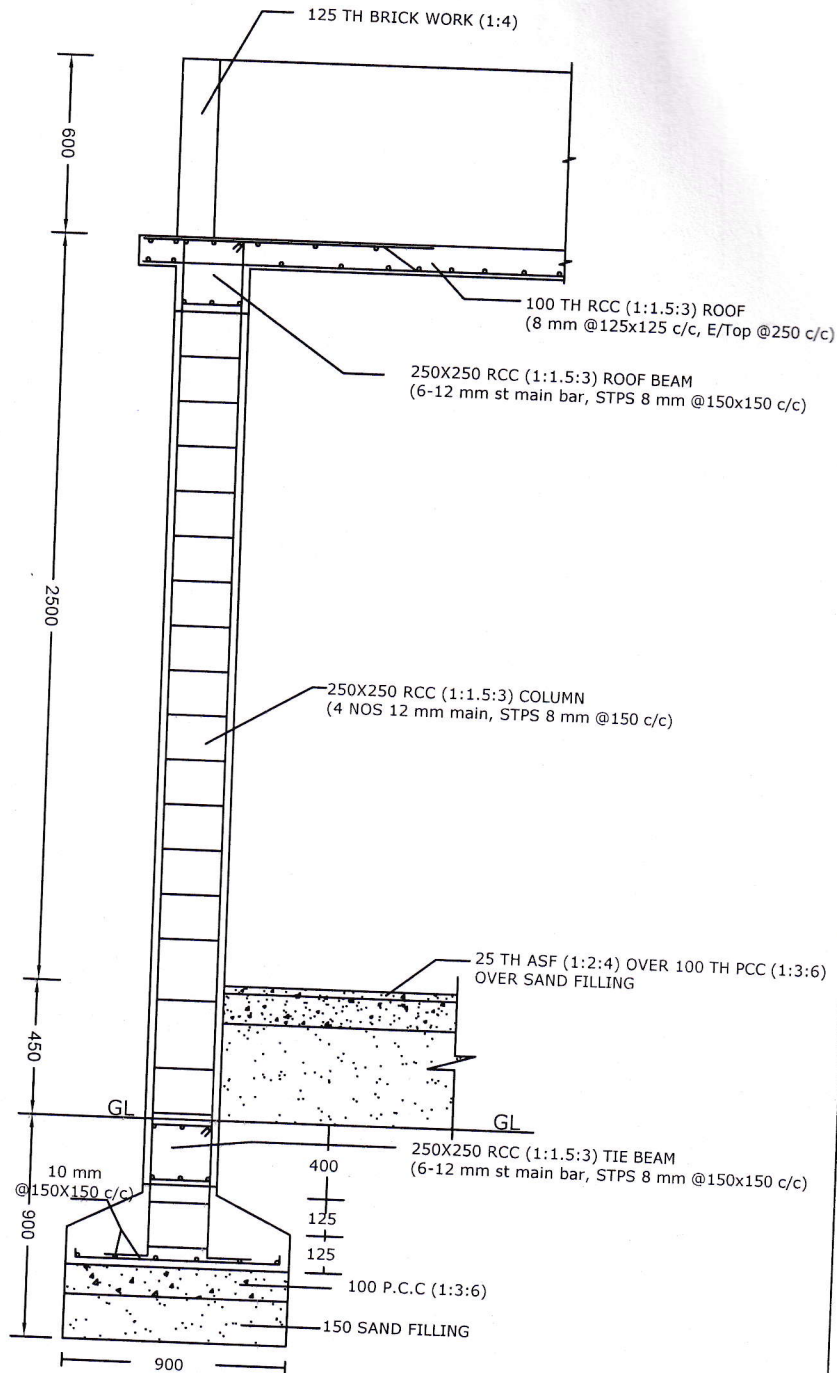
02/01/19
Assistant Engineer
MGNREGA CELL
Paschim Medinipur
CHECKED BY:

Executive Engineer
Panchayet & Rural Dev. Dep
Govt. of West Bengal
schim Medinipur Zilla Parishad
APPROVED BY:

**MODEL DRAWING FOR CONSTRUCTION OF COMMON TOILET
FOR GRAMIN HUT WITHIN PASCHIM MEDINIPUR DISTRICT**



PLAN OF TOILET (1:50)
D=775X2100



DETAILS OF FOUNDATION (1:25)

NOTES-

All dimensions are in MM.
Scale-1:100, 1:50 & 1:25
Grade of conc -P.C.C.-(6:3:1),R.C.C.-(3:1.5:1)

[Signature]
02/01/19
Technical Assistant (HQ)
MGNREGA CELL
Paschim Medinipur
PREPARED BY:

[Signature]
02/07/19
Assistant Engineer
MGNREGA CELL
Paschim Medinipur
CHECKED BY:

Executive Engineer
Panchayet & Rural Dev. Dep
Govt of West Bengal
Paschim Medinipur Zilla Panchayet
APPROVED BY: